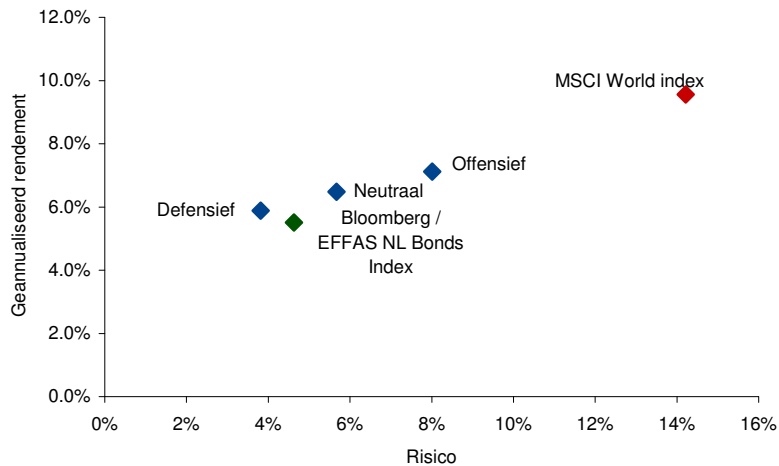


# Goris & Ladru Vermogensbeheerrekening

Factsheet t/m augustus 2011

## Risico/rendement grafiek



## Diverse gegevens

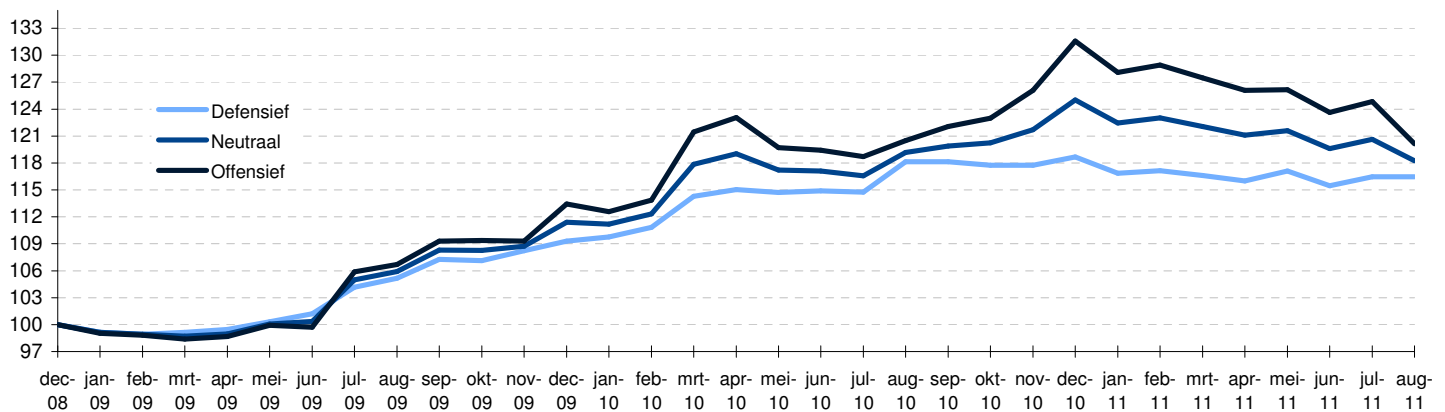
### Statistieken portefeuille vanaf oprichting; gemiddeld per jaar

|           | Defensief | Neu  | Off  | MSCI  | EFFAS |
|-----------|-----------|------|------|-------|-------|
| Rendement | 5.9%      | 6.5% | 7.1% | 9.6%  | 5.5%  |
| Risico    | 3.8%      | 5.7% | 8.0% | 14.2% | 4.6%  |

### Rendementen per jaar

|          | Defensief | Neu   | Off   | MSCI   | EFFAS |
|----------|-----------|-------|-------|--------|-------|
| 2009     | 9.3%      | 11.4% | 13.4% | 23.6%  | 3.7%  |
| 2010     | 8.6%      | 12.2% | 16.0% | 17.0%  | 6.2%  |
| 2011     | -1.9%     | -5.4% | -8.7% | -11.8% | 4.7%  |
| augustus | 0.0%      | -2.0% | -3.8% | -7.4%  | 2.2%  |

## Ontwikkeling Profielen



## Samenstelling Profielen

|                                 | Defensief | Neutraal | Offensief |
|---------------------------------|-----------|----------|-----------|
| <b>Vastrentend</b>              | 100.0%    | 100.0%   | 100.0%    |
| LODH Emerging Markets Bond Fund | 11.1%     | 22.2%    | 33.3%     |
| Optimix Income Fund             | 61.1%     | 42.2%    | 33.3%     |
| Lyxor ETF EuroMTS 1-3y          | 16.6%     | 13.3%    | -         |
| Petercam Bonds Higher Yield     | 11.1%     | 22.2%    | 33.3%     |

De waarde van uw belegging kan fluctueren. In het verleden behaalde resultaten bieden geen garantie voor de toekomst. Alle weergegeven resultaten zijn na kosten.